

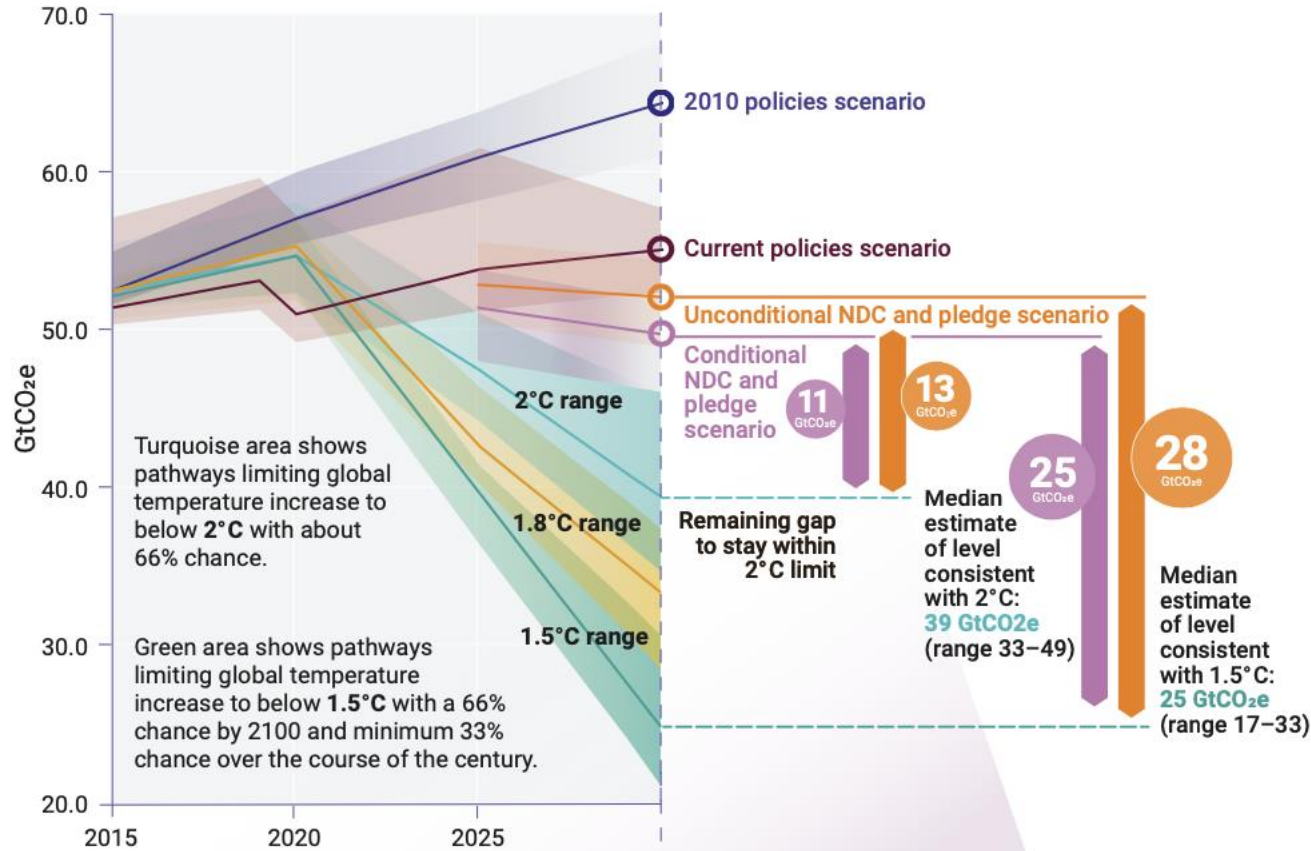
November 2021

From Data to Action: International Methane Emissions Observatory (IMEO)



Manfredi Caltagirone

The world is not on track to limit the temperature increase to 1.5 degrees



Emissions Gap Report 2021

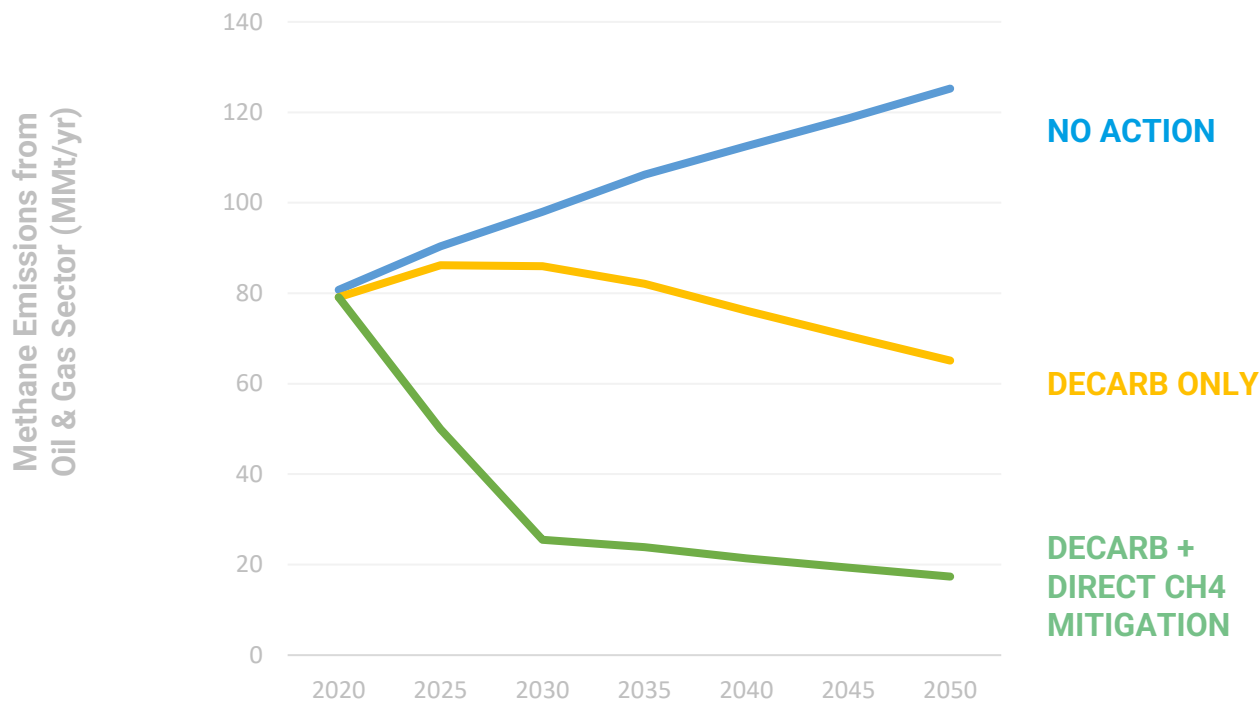
The emissions gap remains large: compared to previous unconditional NDCs, the new pledges for 2030 reduce projected 2030 emissions by only 7.5 per cent, whereas 30 per cent is needed for 2°C and 55 per cent is needed for 1.5°C.

Current NDCs cover only about one third of the methane reduction required to be consistent with a 2 ° C temperature goal, and only about 23 per cent of what is needed for the 1.5 ° C goal.

Reduction of methane emissions from the fossil fuel, waste and agriculture sectors can contribute significantly to closing the emissions gap and reduce warming in the short term.

Targeted measures are needed to realize the full potential of methane mitigation in the fossil fuel sector

Methane Emissions Scenarios



Ocko et al., Acting rapidly to deploy readily available methane mitigation measures by sector can immediately slow global warming, 2021.

According to the International Energy Agency

1. Methane emissions from the oil and gas sector could be reduced with technologies that exist today

by 75%

2. The measures pay for themselves quickly by saving money:

~ 50%

3. Available targeted measures have

negative costs

IMEO catalyzes reductions in anthropogenic methane emissions at a scale and speed consistent with 1.5 °C, starting with the energy sector

Method

Providing **accurate data on the location, scale, and sources** of emissions globally, engaging with the fossil fuel sector at the asset level.

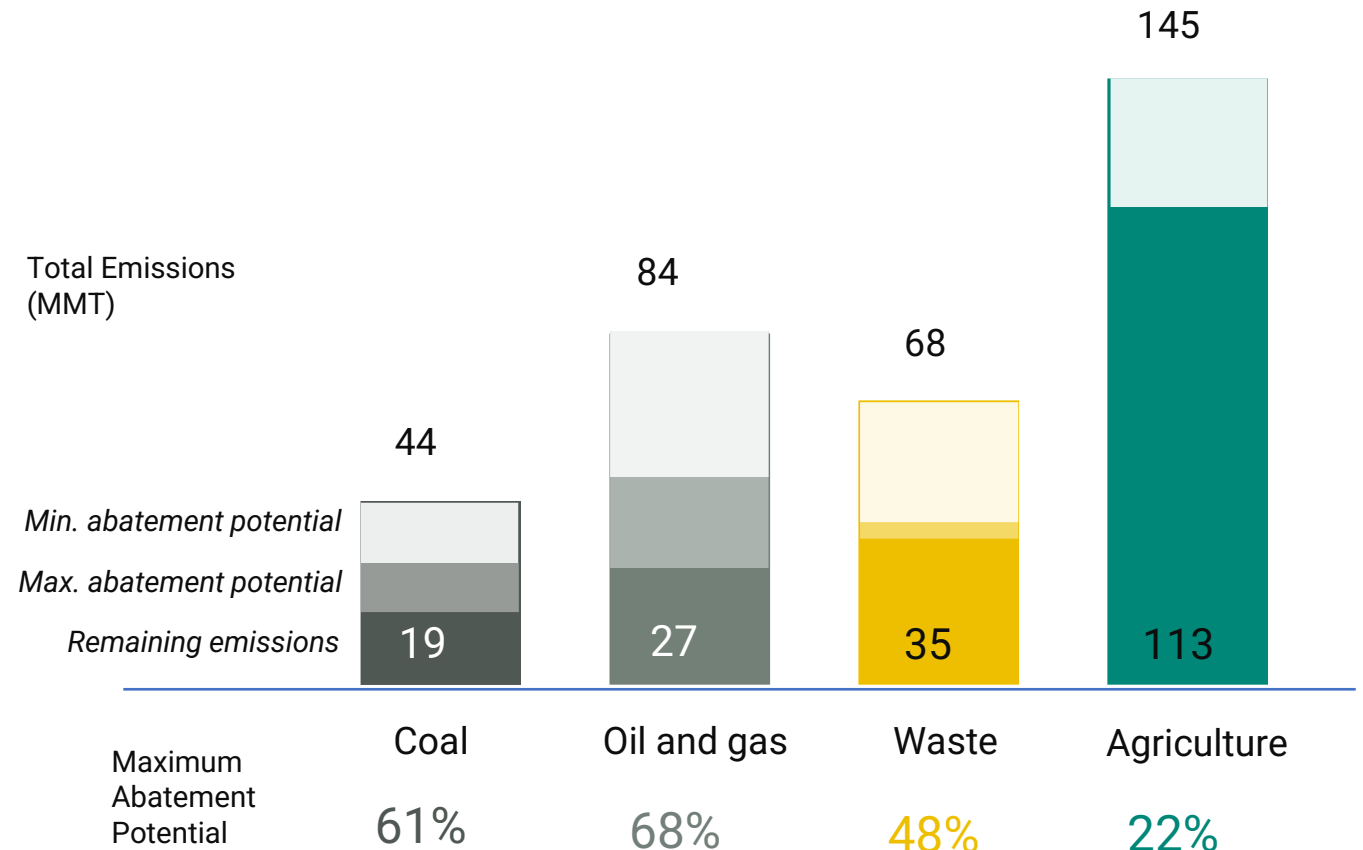
Outputs

Public, global dataset

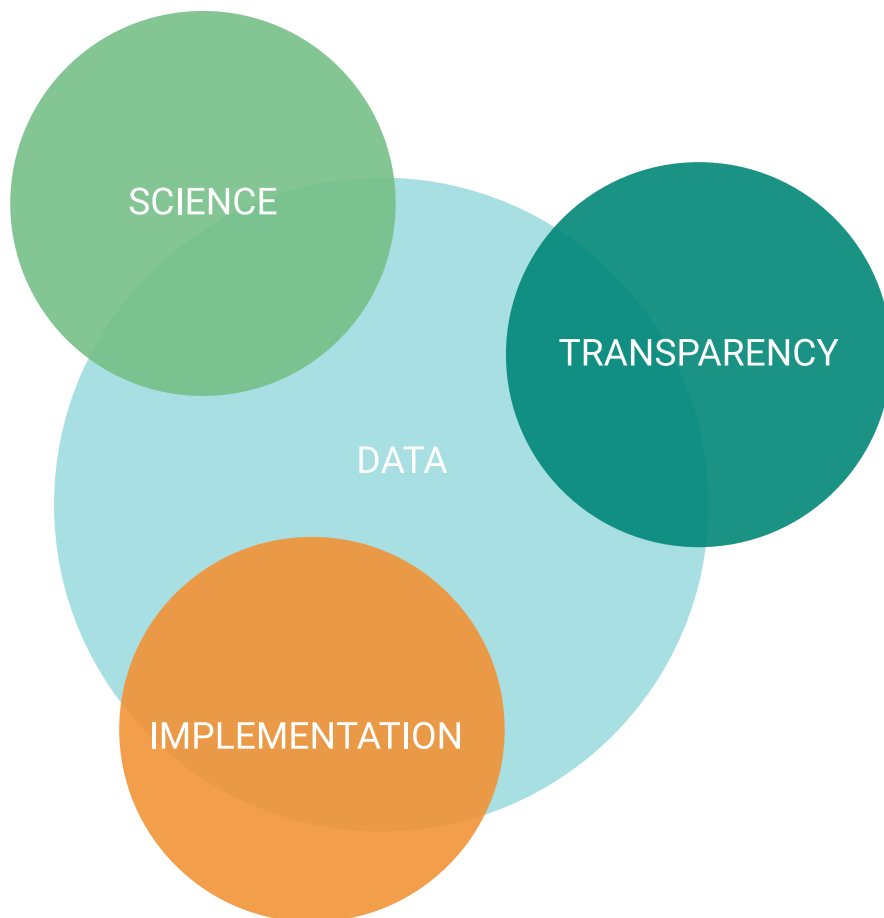
Annual report on the state of methane

Peer-reviewed scientific studies

Methane Emissions Reduction Potential by Sector



IMEO helps transforming high-level ambition into field-level action



Governments – use data to focus targeted action domestically and abroad



Companies – provide means to credibly reduce emissions at the asset level



Investors – differentiate company performance on methane management



Civil society – hold governments and companies accountable for reduction targets

IMEO: a key implementing vehicle of the Global Methane Pledge



“The Global Methane Pledge Makes cutting methane emissions a global undertaking. This must be supported by sound scientific basis and a capacity to monitor and calculate methane emissions. Because we all know that only what gets measured gets done.”

-- Ursula von der Leyen, President of the European Commission

“IMEO will play an important role in creating a sound scientific basis for methane emissions calculations and delivering the Global Methane Pledge”

-- Joint EU-US Press Release on the Global Methane Pledge

“IMEO is crucial for the Global Methane Pledge to be successful. IMEO is uniquely placed to create a sound & independent scientific basis for methane emissions calculations & reductions: no other organization can fill this role as effectively.”

IMEO activities accelerate and support growing ambition on methane emissions globally

Improving and verifying industry reporting



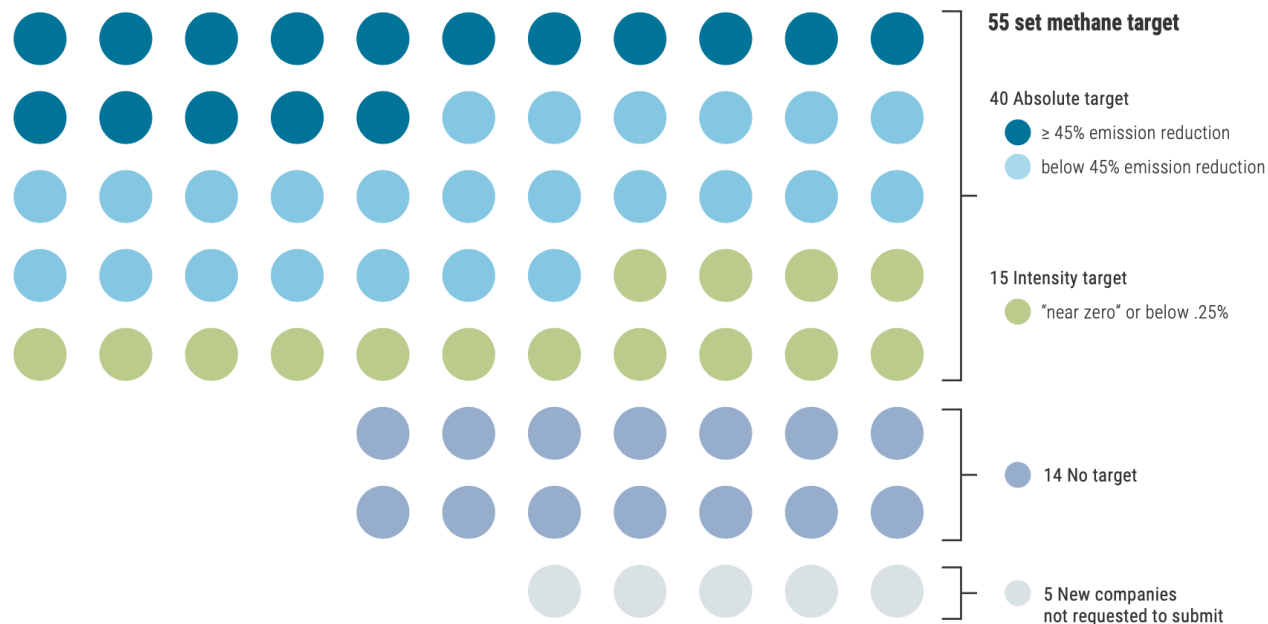
74 member companies with assets representing over 30% of global oil and gas production

Measurement-based reporting will be integrated, reconciled, and verified by IMEO

Working on detailing measurements, sampling, reconciliation approaches with companies

Recruitment on-going

Overview of OGMP member company targets



IMEO's activities will accelerate and support growing ambition on methane emissions globally

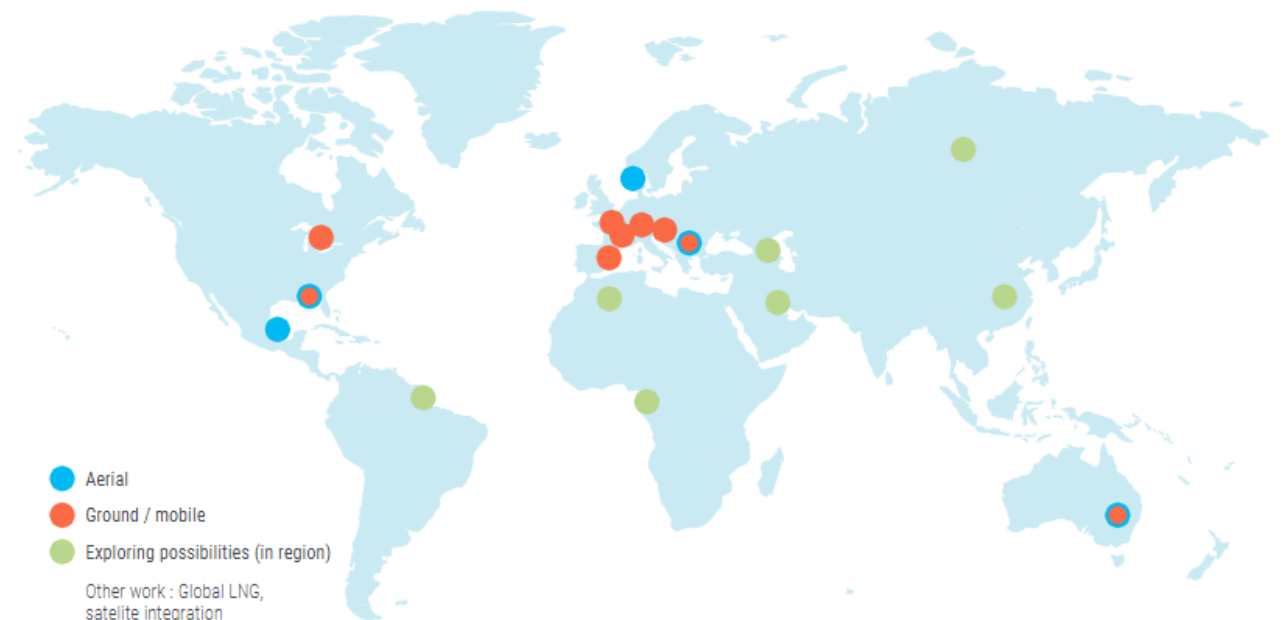
Improving and verifying industry reporting

Funding scientific measurement studies

IMEO Science Core Principles

1. Study led by independent academic institutions
2. Integrating multiple measurement methodologies
3. Design and results reviewed by independent panel of scientists
4. Collected data is publicly accessible
5. Final results published in peer reviewed journals

Location of Past and Future Studies



IMEO's activities will accelerate and support growing ambition on methane emissions globally

Improving and verifying industry reporting

Funding scientific measurement studies

Engaging satellite providers



Working with Copernicus (Sentinel 2 - 5p), GHGSat, Prisma, GoSat and analytics companies such as Kayrros

Closely coordinating with MethaneSAT, Carbon Mapper, Satlantis, etc.

IMEO's activities will accelerate and support growing ambition on methane emissions globally

Improving and verifying industry reporting

Funding scientific measurement studies

Engaging satellite providers

Developing strategies for metcoal

1. Metcoal Methane Partnership (MMP)

- In the process of designing MMP with metcoal companies representing ~20% of production globally
- Steering committee & working group established

2. Coal Science studies

- Initial phase underway led by Imperial College London
- Phase II (measurement studies) being designed engaging coal industry, leading research groups and universities

IMEO's activities will accelerate and support growing ambition on methane emissions globally

Improving and verifying industry reporting

Funding scientific measurement studies

Engaging satellite providers

Developing strategies for metcoal

High-level country engagement



Original funder, collaborated on design, positioning IMEO to help deliver EU methane strategy



Launched at Rome Summit, referenced in communique



Referenced in Global Methane Pledge



In discussions with other major oil and gas producing and consuming nations

IMEO's activities will accelerate and support growing ambition on methane emissions globally

Improving and verifying industry reporting

Funding scientific measurement studies

Engaging satellite providers

Developing strategies for metcoal

High-level country engagement

IMEO structure and governance

- **Implementation Committee:** guiding the establishment of IMEO
- **Executive Board:** Leads strategic direction of IMEO, comprised of funding countries
- **Scientific Oversight Committee:** Oversees scientific and technical aspects of IMEO, includes leading scientists representing a variety of expertise and disciplines
- **Advisory Council:** Representatives from NGOs, IGOs, scientific community, and industry (through member companies of OGMP 2.0) share guidance on IMEO activities



Thank you